

Technical Data Sheet	Gas booster	DLE 15-1 Single acting, single stage, single air drive head
----------------------	--------------------	---

Available DLE series

- Single acting, single stage, single air drive head
- Double acting, single stage, single air drive head
- Double acting, single stage, double air drive head
- Single acting, two stages, single air drive head
- Single acting, two stages, double air drive head



Technical Data:

Air drive pressure pL:	1-10 bar / 14.5—145 psi
Pressure ratio i:	1:15
Compression ratio	1:20
Minimum suction pressure pA:	7
Maximum suction pressure pA:	150 bar
Maximum outlet pressure pB:	150 bar
Displacement volume/double stroke	122 cm ³
Maximum cycles	130 / min
Stall pressure	PB = i * pL

Standard connections

Air drive	3/4 BSP
DLE 15-1 (-GG)	Inlet/Outlet: 1/4BSP
Maximum Operating Temperature	100°C
Net Weight	13 kg

Pressure and flow performances, please see enclosed graph.

Materials of construction hp section DLE 15-1:	Standard seal package	PTFE, Viton
	Compressor head	1.4305
	HP cylinder	1.4057
	HP piston	1.4305
	Fittings	1.4305
	Balls	1.4034
	Springs	X12CrNi177
Approximate Dimensions:	Length	448 mm
	Width	181 mm
	Height	275 mm
Available Options:	Inert gas service (standard)	DLE 15-1 (-GG) (materials of construction as above indicated)
	Oxygen service	DLE 15-1-GG- S parts especially oxygen cleaned
	CO ₂ service	DLE 15-1-GG- C Seal package: PTFE, NBR
	Other inlet and outlet ports	Order codes
	Inlet: 9/16-18UNF Outlet: 9/16-18UNF	DLE 15-1- UU
	Inlet: 1/4NPT Outlet: 1/4NPT	DLE 15-1- NN
Special seal material to handle special gases on request.		
Available Accessories		
Air control units for DLE series with filter pressure regulator, control pressure gauge and shut off valve:	DLE 15-1 with C2	
To protect the booster against excessive outlet pressures or to limit the outlet pressure, a safety valve can be fitted to the air control unit in the air drive line:	DLE 15-1 with C2/SVair (The required outlet pressure has to be indicated.)	

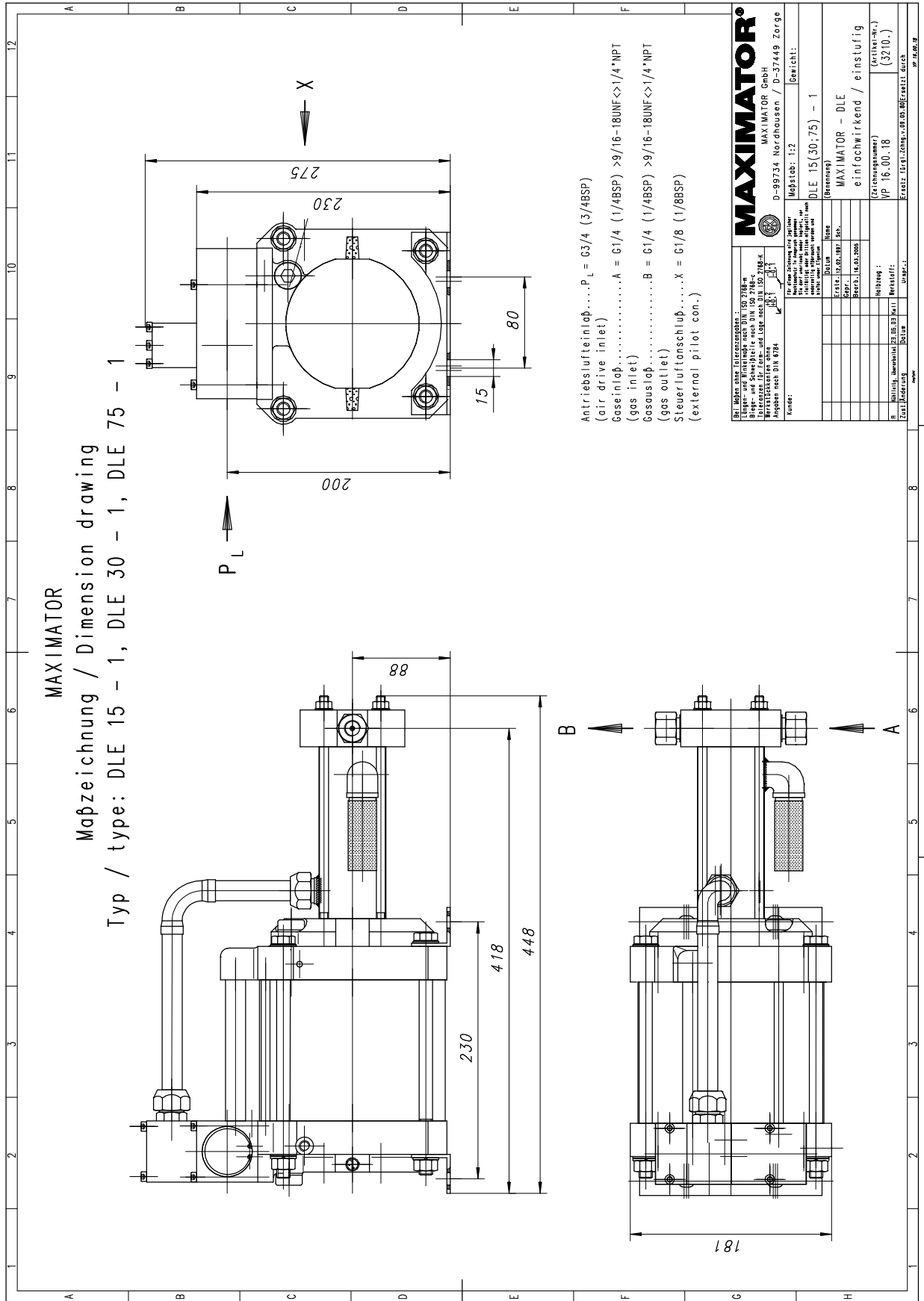
Please consult factory for more information.

All technical and dimensional information subject to change. All General Terms and Conditions of sale, including limitations of our liability, apply to all products and services sold

MAXIMATOR

Maßzeichnung / Dimension drawing

Typ / type: DLE 15 - 1, DLE 30 - 1, DLE 75 - 1



Antriebslufteinlaß... P_L = G3/4 (3/4BSP)
 (air drive inlet)
 Gaseinlaß..... A = G1/4 (1/4BSP) > 9/16-18UNF <> 1/4"NPT
 (gas inlet)
 Gasauslaß..... B = G1/4 (1/4BSP) > 9/16-18UNF <> 1/4"NPT
 (gas outlet)
 Steuerluftanschluß..... X = G1/8 (1/8BSP)
 (external pilot con.)

MAXIMATOR® MAXIMATOR GmbH D-99734 Nordhausen / D-37449 Zorge	
Bei Maßstab ohne Notwendigkeiten: Maße und Abstände nach DIN ISO 2768-mS Toleranzen für Form- und Lage nach DIN ISO 2768-k Werkstücke ohne Nacharbeiten Angaben nach DIN 9134	Maßstab: 1:2 Gewicht:
Kunden: Name: Adresse: Telefon: Telefax: E-Mail: Fax:	DLE 15 (30,75) - 1 (Benennung) MAXIMATOR - DLE einfachwirkend / einstufig (Zeichnungsnummer) NP 16.00.18 (Serien-nr.) (3210.) Ersatz für: DLE 15, DLE 30, DLE 75 Ersatz für: DLE 15, DLE 30, DLE 75
Material: Ausführung: Farbe: Oberfläche:	DLE 15 (30,75) - 1 (Benennung) MAXIMATOR - DLE einfachwirkend / einstufig (Zeichnungsnummer) NP 16.00.18 (Serien-nr.) (3210.) Ersatz für: DLE 15, DLE 30, DLE 75 Ersatz für: DLE 15, DLE 30, DLE 75



