

Technical Data Sheet	Gas booster	DLE 5-1 single acting, single stage, single air drive head
----------------------	--------------------	--

Available DLE series

- Single acting, single stage, single air drive head
- Double acting, single stage, single air drive head
- Double acting, single stage, double air drive head
- Single acting, two stages, single air drive head
- Single acting, two stages, double air drive head



Technical Data:

Air drive pressure pL	1-10 bar / 14.5—145 psi
Pressure ratio i	1:5
Compression ratio	1:15
Minimum suction pressure pA	2
Maximum suction pressure pA	50 bar
Maximum outlet pressure pB	50 bar
Displacement volume/double stroke	373 cm ³
Maximum cycles	110 / min
Stall pressure	PB = i * pL

Standard connections

Air drive	3/4 BSP
DLE 5-1 (-GG)	Inlet/Outlet: 1/2BSP
Maximum operating temperature	60°C
Net weight	15 kg

Pressure and flow performances, please see enclosed graph.

Materials of construction hp section DLE 5-1:	Standard seal package	PTFE, Viton
	Compressor head	Aluminium Anodized
	HP cylinder	Hard coated aluminium
	HP piston	Aluminium
	Fittings	1.4305
	Balls	1.4034
	Springs	X12CRNi177
Approximate Dimensions:	Length	442 mm
	Width	181 mm
	Height	275 mm
Available Options:	Inert gas service (standard)	DLE 5-1 (-GG) (materials of construction as above indicated)
	Oxygen service	DLE 5-1-GG- S Materials of construction in contact with oxygen of stainless steel and especially oxygen cleaned
	CO ₂ service	DLE 5-1-GG- C Seal package: PTFE, NBR
	Other inlet and outlet ports	Order codes
	Inlet: 3/8NPT Outlet: 3/8NPT	DLE 5-1- NN
Special seal material to handle special gases on request.		
Available Accessories		
Air control units for DLE series with filter pressure regulator, control pressure gauge and shut off valve	DLE 5-1 with C2	
To protect the booster against excessive outlet pressures or to limit the outlet pressure, a safety valve can be fitted to the air control unit in the air drive line:	DLE 5-1 with C2/SVair (The required outlet pressure has to be indicated.)	

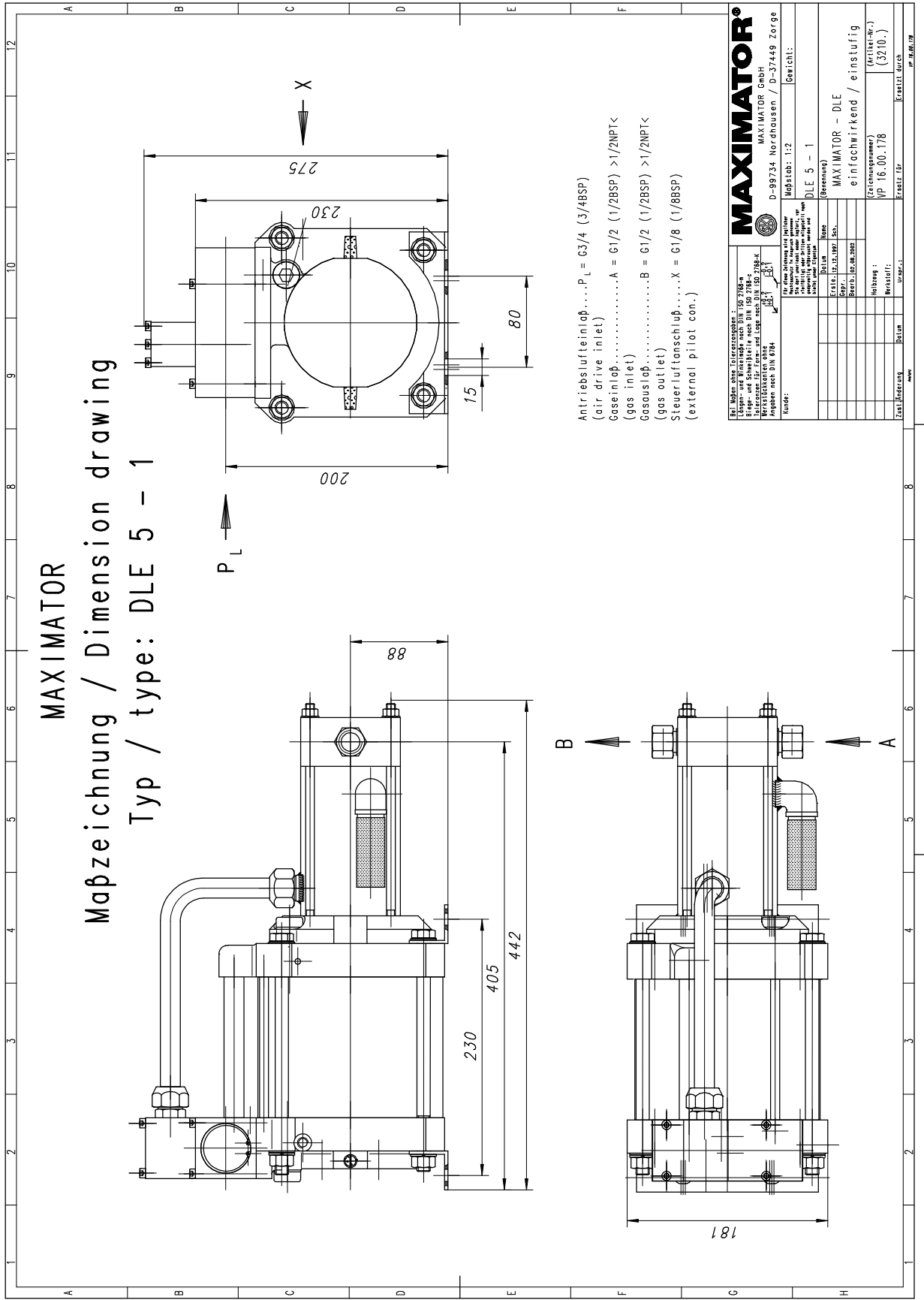
Please consult factory for more information.

All technical and dimensional information subject to change. All General Terms and Conditions of sale, including limitations of our liability, apply to all products and services sold

MAXIMATOR

Maßzeichnung / Dimension drawing

Typ / type: DLE 5 - 1



Antriebslufteinlaß.....P_L = G3/4 (3/4BSP)
 (air drive inlet)
 Gaseinlaß.....A = G1/2 (1/2BSP) >1/2NPT<
 (gas inlet)
 Gasauslaß.....B = G1/2 (1/2BSP) >1/2NPT<
 (gas outlet)
 Steuerluftanschluß.....X = G1/8 (1/8BSP)
 (external pilot con.)

MAXIMATOR® MAXIMATOR GmbH D-99734 Nordhausen / D-37449 Zorge	
Maßstab: 1:2 (Drawing Scale)	Gewicht: (Weight)
DLE 5 - 1 (Designation)	MAXIMATOR - DLE einföchrirkend / einstufig (Zylinderbauweise) (Cylinder construction) (3210)
Hersteller: (Manufacturer)	Ersatz für: (Replacement for)
Teil-Nr.: (Part No.)	Datum: (Date)

