

Technical Data Sheet	Gas booster	DLE 5-30 single acting, two stages, single air drive head
----------------------	--------------------	---

Available DLE series

- Single acting, single stage, single air drive head
- Double acting, single stage, single air drive head
- Double acting, single stage, double air drive head
- Single acting, two stages, single air drive head
- Single acting, two stages, double air drive head



Technical Data:

Air drive pressure pL	1-10 bar / 14.5—145 psi
Pressure ratio i	1:5 / 1:30
Compression ratio	1:90
Stage pressure ratio	1:6
Minimum suction pressure pA	2 bar
Maximum suction pressure pA	0.5* air drive pressure
Maximum outlet pressure pB	600 bar
Displacement volume/double stroke	373 cm³
Maximum cycles	110 / min
Stall pressure	PB = 30*pL+ 30/5*pA

Standard connections

Air drive	3/4 BSP
DLE 5-30 (-GG)	Inlet: 1/2BSP Outlet: 1/4 BSP
Maximum operating temperature	100°C
Net weight	19 kg

Pressure and flow performances, please see enclosed graph.

Materials of construction hp section DLE 5-30:	Standard seal package	PTFE, Viton
	Compressor head	1.4305
	HP cylinder	1.4057
	HP piston	1.4304
	Fittings	1.4305
	Balls	1.4034
	Springs	X12CrNi177
Approximate Dimensions:	Length	612 mm
	Width	181 mm
	Height	233 mm
Available Options:	Inert gas service (standard)	DLE 5-30 (-GG) (materials of construction as above indicated)
Special seal material to handle special gases on request.	Oxygen service	DLE 5-30-GG- <u>S</u> (parts oxygen cleaned)
	CO ₂ service	DLE 5-30-GG- <u>C</u> Seal package: PTFE, NBR
	Other inlet and outlet ports	Order codes
	Inlet: 1/2 BSP Outlet: 9/16-18 UNF	DLE 5-30- <u>GU</u>
	Inlet: 3/8NPT Outlet: 1/4NPT	DLE 5-30- <u>NN</u>
Available Accessories		
Air control units for DLE series with filter pressure regulator, control pressure gauge and shut off valve	DLE 5-30 with C2	
To protect the booster against excessive outlet pressures or to limit the outlet pressure, a safety valve can be fitted to the air control unit in the air drive line:	DLE 5-30 with C2/SVair (The required outlet pressure has to be indicated.)	

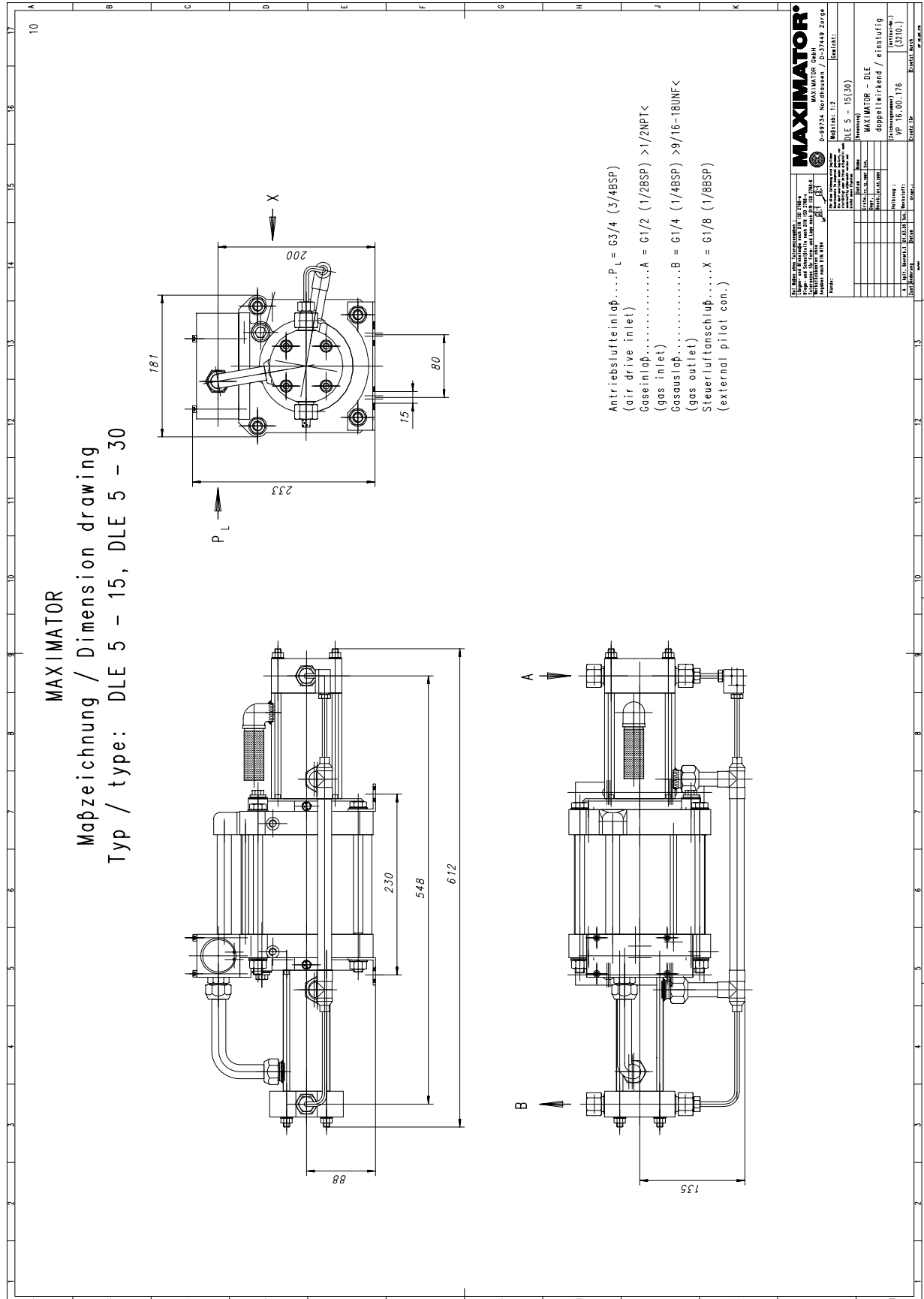
Please consult factory for more information.

All technical and dimensional information subject to change. All General Terms and Conditions of sale, including limitations of our liability, apply to all products and services sold

MAXIMATOR

Maßzeichnung / Dimension drawing

Typ / type: DLE 5 - 15, DLE 5 - 30



Antriebslufteinlaß...P_L = G3/4 (3/4BSP)
 (air drive inlet)
 Gaseinlaß.....A = G1/2 (1/2BSP) >1/2NPT<
 (gas inlet)
 Gasauslaß.....B = G1/4 (1/4BSP) >9/16-18UNF<
 (gas outlet)
 Steuerluftanschluß.....X = G1/8 (1/8BSP)
 (external pilot con.)

MAXIMATOR	
MAXIMATOR S.p.A. Via S. Maria Maddalena, 10 10121 TORINO, ITALIA Tel. +39 011 24001 Fax +39 011 24002 E-mail: max@maxitech.it	MAXIMATOR GmbH Industriestraße 1 44789 Bielefeld, Germany Tel. +49 521 90734 Fax +49 521 90735 E-mail: mx@maxitech.fr
Typ: DLE 5 - 15(30) Ausführung: doppelwirkend / einstufig (3210)	Druck: VP 16.00.176 Material:

