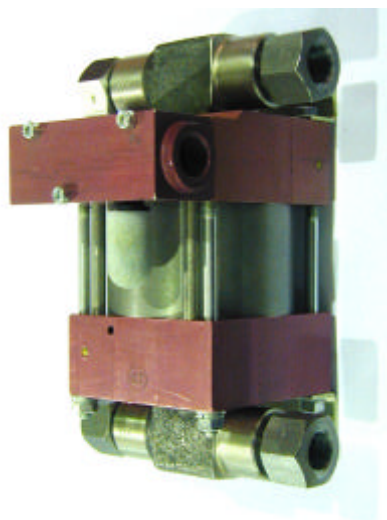


Technical Data Sheet	M111D	Oil service
	M111DVE	Water service



M111D
double acting, single air drive head
(Standard= Side inlet)

Technical Data:

Air drive pressure:	1-10 bar / 14,5—145 psi
Calculated Outlet Pressure at an air drive of 10 bar/145 psi	1,300 bar/ 18,850 psi
Pressure ratio:	1:130
Displacement volume/double stroke	2.0 cm ³ / 0.12 cu.inch
Connections	
Inlet:	Standard: Side inlet 3/8 BSP
Outlet:	3/8 BSP
Air drive	3/8 BSP
Maximum operating temperature	60°C
Net weight	3.7 kg

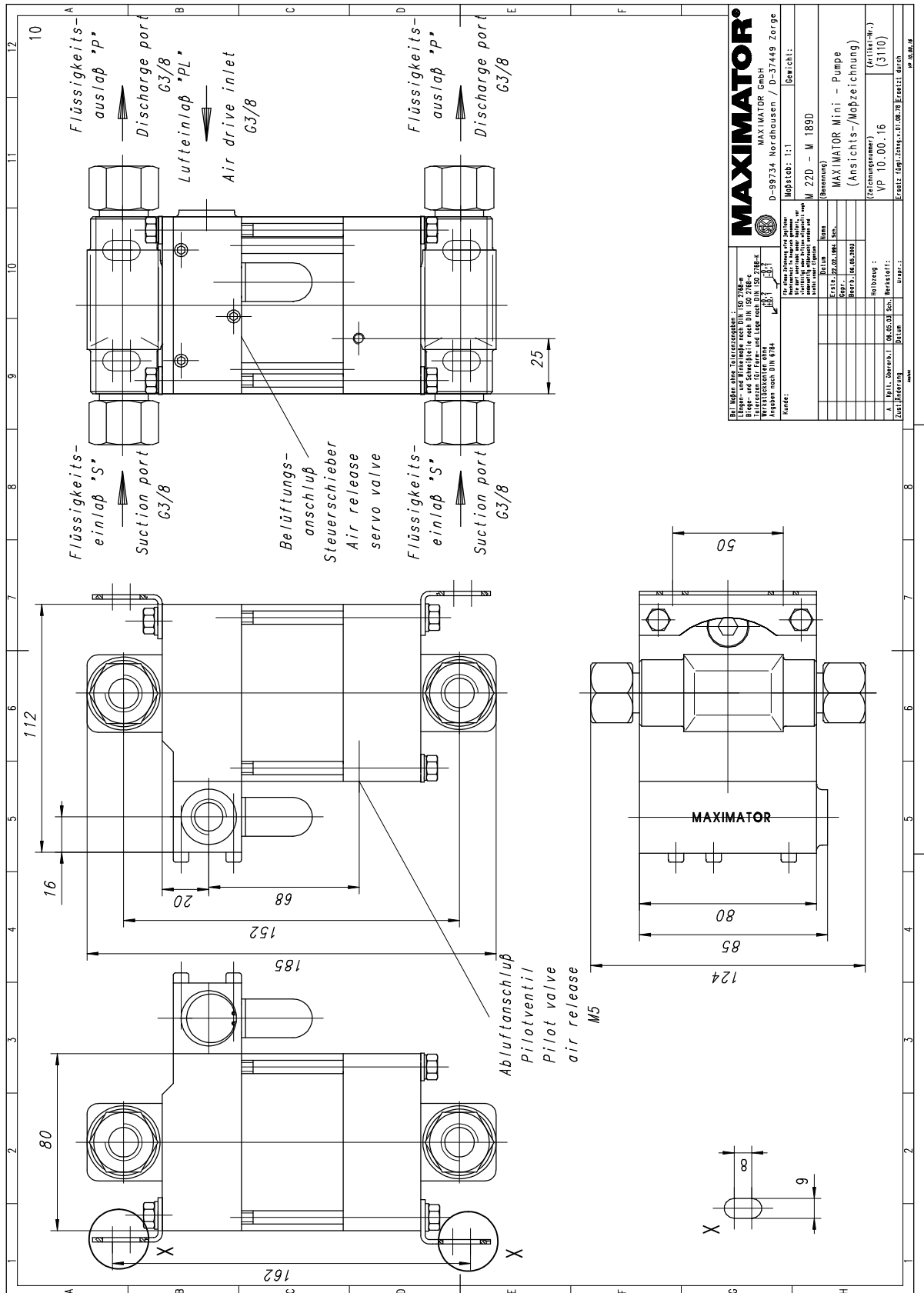
Pressure and flow performances, please see enclosed graph.

Wetted materials of construction:	seal package:	M111D: Polyurthane, Buna N M111DVE: UHMWPE, Viton
	Pump Body:	1.4305
	Piston	1.4112 (hardened)
	Fittings	1.4104
Approximate Dimensions:	Height:	195 mm
	Depth:	104 mm
	Width:	112 mm
Available Options:	Seal material for oil service (standard)	M111D
	Seal material for water service	M111DVE
	Liquid inlet	Standard: side inlet, bottom inlet not available
	Special inlet and outlet ports, i.e. NPT	M111D-NPT M111DVE-NPT
	Special seal material to handle special fluids on request.	
Available Accessories		
Air control units for M series with filter pressure regulator, control pressure gauge and shut off valve:	M111D with C1	
To protect the pump against excessive outlet pressures or to limit the outlet pressure, a safety valve can be fitted to the air control unit in the air drive line:	M111D with C1/SVair (The required outlet pressure has to be indicated.)	

Please consult factory for more information.

All technical and dimensional information subject to change. All General Terms and Conditions of sale, including limitations of our liability, apply to all products and services sold.

Standard pump comes with BSP ports and side inlet. Bottom inlet not available.



Leistungsdiagramm/Performance Graph M(O) 111 D

Prüfflüssigkeit/Test Liquid: Wasser-Öl-Emulsion/Water Oil Emulsion ca. 1 - 10 cst

