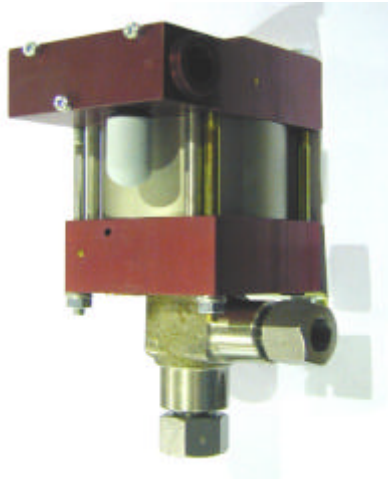


| | | |
|----------------------|------------------|---------------|
| Technical Data Sheet | M111(L) | Oil service |
| | M111(L)VE | Water service |



M111(L)
single acting, single air drive head
(Standard= Bottom inlet)

Technical Data:

| | |
|--|------------------------------------|
| Air drive pressure: | 1-10 bar / 14,5—145 psi |
| Calculated Outlet Pressure at an air drive of 10 bar/145 psi | 1,300 bar/ 18,850 psi |
| Pressure ratio: | 1:130 |
| Displacement volume/double stroke | 1.0 cm ³ / 0.06 cu.inch |
| Connections | |
| Inlet: | Standard: Bottom inlet 3/8 BSP |
| Outlet: | 3/8 BSP |
| Air drive | 3/8 BSP |
| Maximum operating temperature | 60°C |
| Net weight | 2.8 kg |

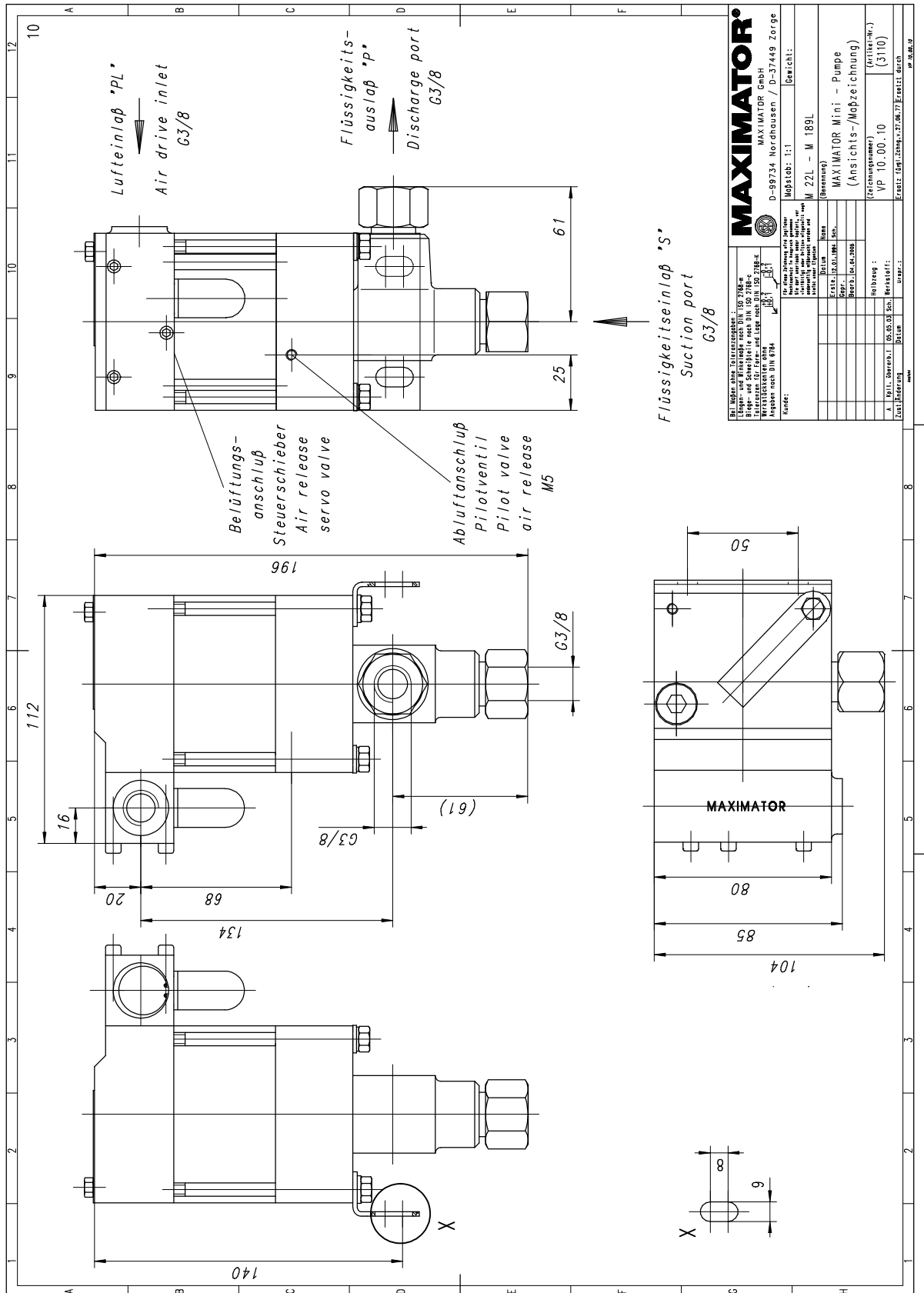
Pressure and flow performances, please see enclosed graph.

| | | |
|---|---|---|
| Wetted materials of construction: | seal package: | M111(L): Polyurthane, Buna N M111(L)VE: UHMWPE, Viton |
| | Pump Body: | 1.4305 |
| | Piston | 1.4112 (hardened) |
| | Fittings | 1.4104 |
| Approximate Dimensions: | Height: | 195 mm |
| | Depth: | 104 mm |
| | Width: | 112 mm |
| Available Options: | Seal material for oil service (standard) | M111(L) |
| | Seal material for water service | M111(L)VE |
| | Side inlet | M111(L)S/ M111(L)VES |
| | Hand lever/ Spring return | M111-HL (only available with seal package Polyurethane, Buna N) |
| | External pilot port modification | M111(L)-DIR |
| | Special inlet and outlet ports, i.e. NPT | M111(L)-NPT M111(L)VE-NPT |
| | Special seal material to handle special fluids on request. | |
| Available Accessories | | |
| Air control units for M series with filter pressure regulator, control pressure gauge and shut off valve: | M111(L) with C1 | |
| To protect the pump against excessive outlet pressures or to limit the outlet pressure, a safety valve can be fitted to the air control unit in the air drive line: | M111(L) with C1/SVair (The required outlet pressure has to be indicated.) | |

Please consult factory for more information.

All technical and dimensional information subject to change. All General Terms and Conditions of sale, including limitations of our liability, apply to all products and services sold.

Standard pump comes with BSP ports and bottom inlet.



| | |
|---|--|
| MAXIMATOR® MAXIMATOR GmbH D-99734 Nordhausen / D-37449 Zorge | |
| Bei allen Druckgeräten: Längen- und Winkelmaße nach DIN 7746 Flächen- und Volumenmaße nach DIN 7748 Masse- und Gewichtmaße nach DIN 7749 Maßstab: 1:1 | Bereich: M 22L - M 189L (Bereich) MAXIMATOR Mini - Pumpe (Ansichts-/Maßzeichnung) VP 10-00-10 (3110) (3110) |
| Kunden: Name: Adresse: Telefon: Fax: E-Mail: Datum | Hersteller: A. Mill. Bauvers. I. 05.05.02 Sch. Hersteller: Datum |

