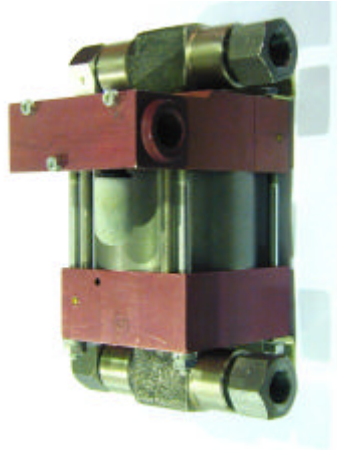


Technical Data Sheet	<b>M37D</b>	Oil service
	<b>M37DVE</b>	Water service



### Technical Data:

Air drive pressure:	1-10 bar / 14,5—145 psi
Calculated Outlet Pressure at an air drive of 10 bar/145 psi	460 bar/ 6,670 psi
Pressure ratio:	1:46
Displacement volume/double stroke	5.6 cm <sup>3</sup> / 0.34 cu.inch
<b>Connections</b>	
Inlet:	Standard: Side inlet 3/8 BSP
Outlet:	3/8 BSP
Air drive	3/8 BSP
Maximum operating temperature	60°C
Net weight	3.7 kg

### M37D

double acting, single air drive head  
(Standard= Side inlet)

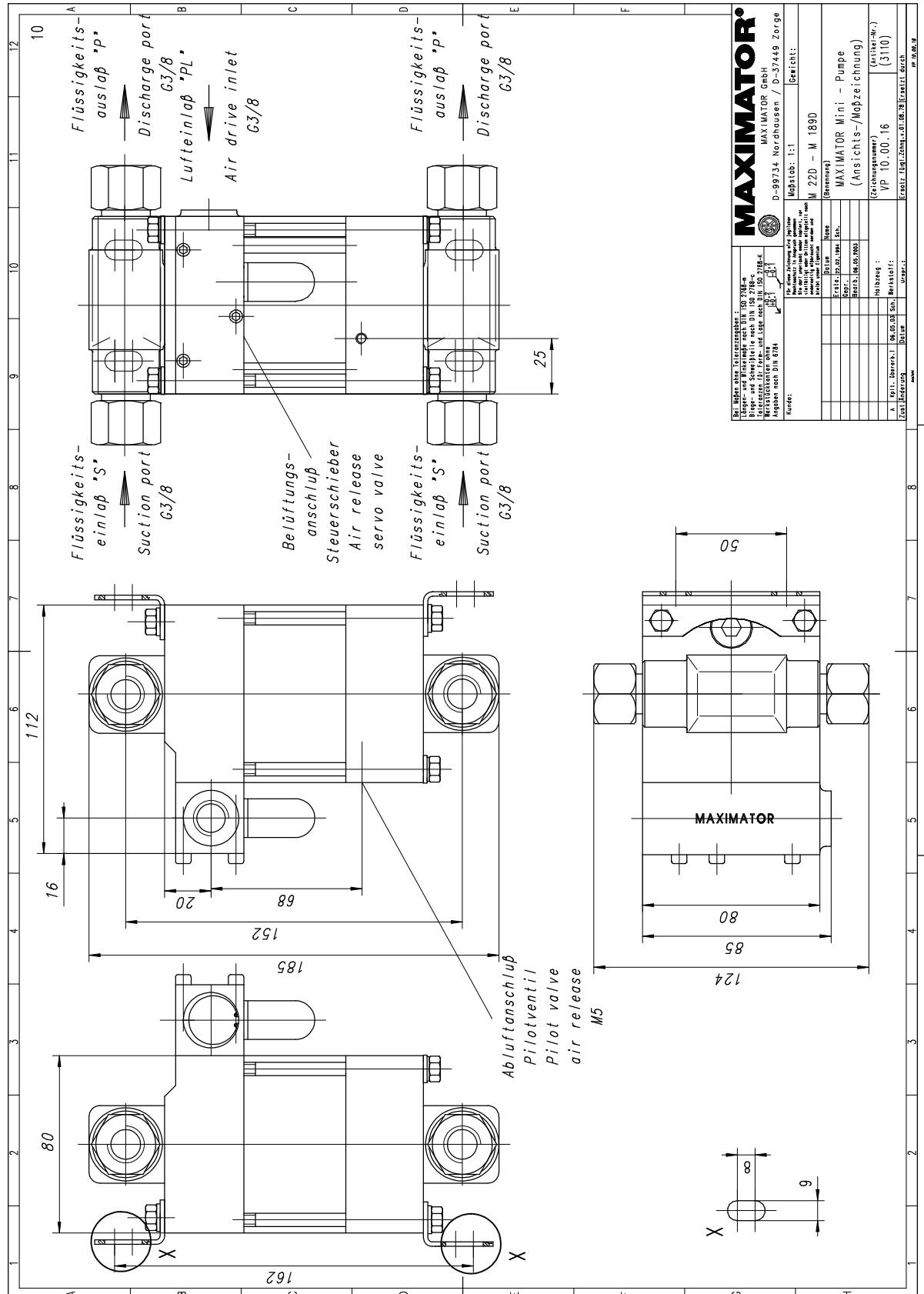
Pressure and flow performances, please see enclosed graph.

<b>Wetted materials of construction:</b>	seal package:	M37D: Polyurthane, Buna N M37DVE: UHMWPE, Viton
	Pump Body:	1.4305
	Piston	1.4112 (hardened)
	Fittings	1.4104
<b>Approximate Dimensions:</b>	Height:	195 mm
	Depth:	104 mm
	Width:	112 mm
<b>Available Options:</b>	Seal material for oil service (standard)	M37D
	Seal material for water service	M37DVE
	Liquid inlet	Standard: side inlet, bottom inlet not available
	Special inlet and outlet ports, i.e. NPT	M37D- <b>NPT</b> M37DVE- <b>NPT</b>
	Special seal material to handle special fluids on request.	
<b>Available Accessories</b>		
Air control units for M series with filter pressure regulator, control pressure gauge and shut off valve:	M37D with C1	
To protect the pump against excessive outlet pressures or to limit the outlet pressure, a safety valve can be fitted to the air control unit in the air drive line:	M37D with C1/SVair (The required outlet pressure has to be indicated.)	

### Please consult factory for more information.

All technical and dimensional information subject to change. All General Terms and Conditions of sale, including limitations of our liability, apply to all products and services sold.

Standard pump comes with BSP ports and side inlet. Bottom inlet not available.



## Leistungsdiagramm/Performance Graph M(O) 37 D

Prüfflüssigkeit/Test Liquid: Wasser-Öl-Emulsion/Water Oil Emulsion ca. 1 - 10 cst

