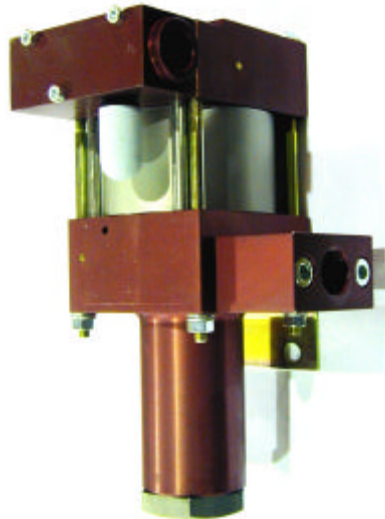


Technical Data Sheet	M4(L)	Oil service
	M4(L)VE	Water service



M4(L)
single acting, single air drive head
(Standard= Bottom inlet)

Technical Data:

Air drive pressure:	1-10 bar / 14,5—145 psi
Calculated Outlet Pressure at an air drive of 10 bar/145 psi	40 bar/ 580 psi
Pressure ratio:	1:4
Displacement volume/double stroke	30.5 cm ³ / 1.86 cu.inch
Connections	
Inlet:	Standard: Bottom inlet 1 BSP
Outlet:	1/2 BSP
Air drive	3/8 BSP
Maximum operating temperature	60°C
Net weight	3.0 kg

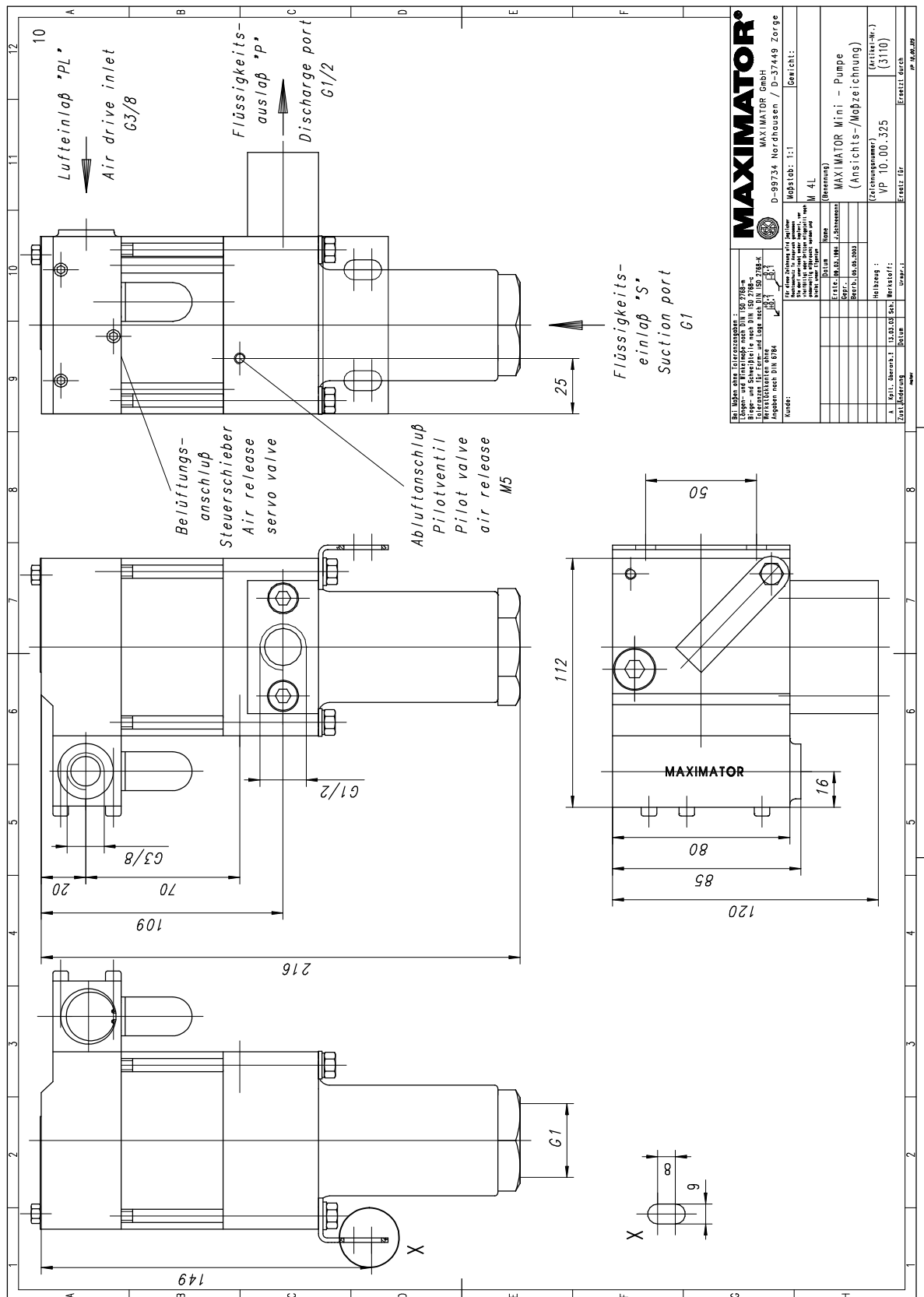
Pressure and flow performances, please see enclosed graph.

Wetted materials of construction:	seal package:	M4(L): Polyurthane, Buna N M4(L)VE: UHMWPE, Viton
	Pump Body:	AlMgSiPB anodized
	Piston	1.4112
	Fittings	Inlet: 1.4305 Outlet: AlMgPbCu anodized
Approximate Dimensions:	Height:	216 mm
	Depth:	120 mm
	Width:	112 mm
Available Options:	Seal material for oil service (standard)	M4(L)
	Seal material for water service	M4(L)VE
	Special inlet and outlet ports, i.e. NPT	M4(L)-NPT M4(L)VE-NPT
		Special seal material to handle special fluids on request.
Available Accessories		
Air control units for M series with filter pressure regulator, control pressure gauge and shut off valve:	M4(L) with C1	
To protect the pump against excessive outlet pressures or to limit the outlet pressure, a safety valve can be fitted to the air control unit in the air drive line:	M4(L) with C1/SVair (The required outlet pressure has to be indicated.)	

Please consult factory for more information.

All technical and dimensional information subject to change. All General Terms and Conditions of sale, including limitations of our liability, apply to all products and services sold.

Standard pump comes with BSP ports and bottom inlet.



Leistungsdiagramm/Performance Graph M(O)(SF) 4

Prüfflüssigkeit/Test Liquid: Wasser-Öl-Emulsion/Water Oil Emulsion ca. 1 - 10 cst

