

Technical Data Sheet	M72(L)	Oil service
	M72(L)VE	Water service



M72(L)
single acting, single air drive head
(Standard= Bottom inlet)

Technical Data:

Air drive pressure:	1-10 bar / 14,5—145 psi
Calculated Outlet Pressure at an air drive of 10 bar/145 psi	860 bar/ 12,470 psi
Pressure ratio:	1:86
Displacement volume/double stroke	1.5 cm ³ / 0.09 cu.inch
Connections	
Inlet:	Standard: Bottom inlet 3/8 BSP
Outlet:	3/8 BSP
Air drive	3/8 BSP
Maximum operating temperature	60°C
Net weight	2.8 kg

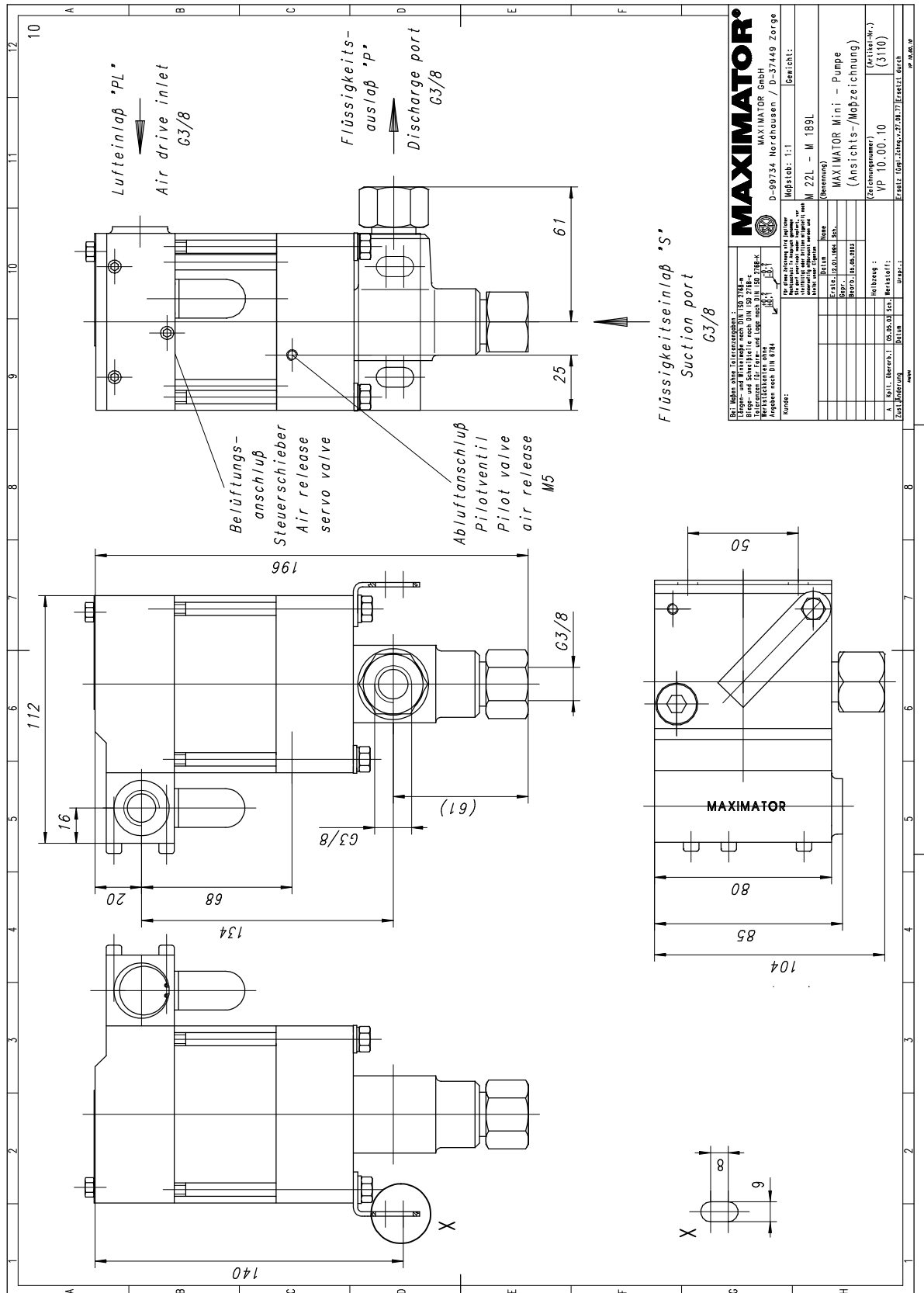
Pressure and flow performances, please see enclosed graph.

Wetted materials of construction:	seal package:	M72(L): Polyurthane, Buna N M72(L)VE: UHMWPE, Viton
	Pump Body:	1.4305
	Piston	1.4112 (hardened)
	Fittings	1.4104
Approximate Dimensions:	Height:	195 mm
	Depth:	104 mm
	Width:	112 mm
Available Options:	Seal material for oil service (standard)	M72(L)
	Seal material for water service	M72(L)VE
	Side inlet	M72(L)S/ M72(L)VES
	Hand lever/ Spring return	M72-HL (only available with seal package Polyurethane, Buna N)
	External pilot port modification	M72(L)-DIR
	Special inlet and outlet ports, i.e. NPT	M72(L)-NPT M72(L)VE-NPT
	Special seal material to handle special fluids on request.	
Available Accessories		
Air control units for M series with filter pressure regulator, control pressure gauge and shut off valve:	M72(L) with C1	
To protect the pump against excessive outlet pressures or to limit the outlet pressure, a safety valve can be fitted to the air control unit in the air drive line:	M72(L) with C1/SVair (The required outlet pressure has to be indicated.)	

Please consult factory for more information.

All technical and dimensional information subject to change. All General Terms and Conditions of sale, including limitations of our liability, apply to all products and services sold.

Standard pump comes with BSP ports and bottom inlet.



MAXIMATOR® MAXIMATOR GmbH D-99734 Nordhausen / D-37449 Zorge	
Kund: M 22L - M 189L Maßstab: 1:1 Zeichnung: VP 10-00-10 (Artikel-Nr.) (3110) Erstellt: 08.05.05 Geprüft: 27.08.07	
In diese Zeichnung sind gezeichnet: Die hier gezeichneten Bauteile sind ausschließlich für den angegebenen Verwendungszweck geeignet. Abweichungen sind nicht zulässig. Änderungen sind nur durch schriftliche Anweisung zulässig.	Name: MAXIMATOR Mini - Pumpe (Ansichts-/Maßzeichnung) Zeichnungsnummer: VP 10-00-10 (Artikel-Nr.): (3110) Erstellt: 08.05.05 Geprüft: 27.08.07

