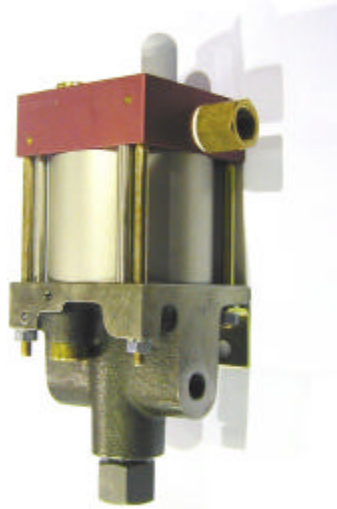


Technical Data Sheet	MO111	Oil service
----------------------	--------------	-------------



Technical Data:

Air drive pressure:	1-10 bar / 14,5—145 psi
Calculated Outlet Pressure at an air drive of 10 bar/145 psi	1,000 bar/ 14,500 psi (maximum permitted)
Pressure ratio:	1:133
Displacement volume/double stroke	1.0 cm ³ / 0.06 cu.inch
Connections	
Inlet:	Standard: Bottom inlet 3/8 BSP
Outlet:	1/4 BSP
Air drive	3/8 BSP
Maximum operating temperature	60°C
Net weight	3.0 kg

MO111

single acting, single air drive head
(Standard= Bottom inlet)

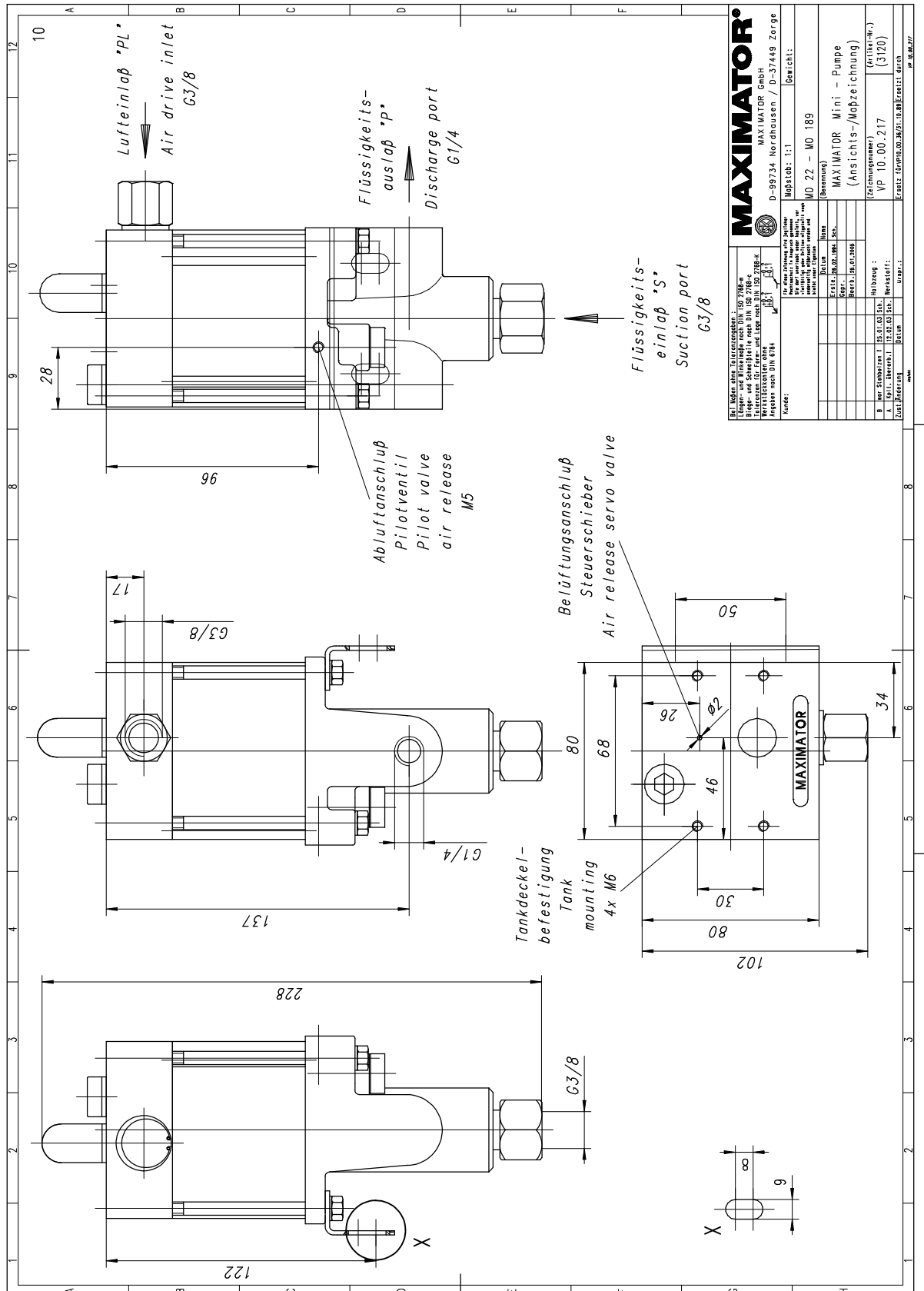
Pressure and flow performances, please see enclosed graph.

Material of construction:	Top cap	Aluminium
	Air cylinder	Aluminium
	seal package:	Polyurethane, Buna N
	Pump Body:	GGG50
	Piston	1.4112 (hardened)
Approximate Dimensions:	Height:	195 mm
	Depth:	104 mm
	Width:	112 mm
	Side inlet	MO111S
	External pilot port modification	MO111- DIR
	Special inlet and outlet ports, i.e. NPT	MO111- NPT
	Special seal material to handle special fluids on request.	
Available Accessories		
Air control units for M series with filter pressure regulator, control pressure gauge and shut off valve:	MO111(L) with C1	
To protect the pump against excessive outlet pressures or to limit the outlet pressure, a safety valve can be fitted to the air control unit in the air drive line:	MO111(L) with C1/SVair (The required outlet pressure has to be indicated.)	

Please consult factory for more information.

All technical and dimensional information subject to change. All General Terms and Conditions of sale, including limitations of our liability, apply to all products and services sold.

Standard pump comes with BSP ports and bottom inlet.



MAXIMATOR® MAXIMATOR GmbH D-99734 Nordhausen / D-37449 Zorge	
Bei allen Bauteilzeichnungen: Längen- und Winkelmaße nach DIN 180 2/180 4 Maßstab: 1:1 Maßstabänderung: nur durch Änderung des Zeichnungsmaßstabes Verfertiger: nur bei Angabe des Zeichnungsmaßstabes Angaben nach DIN 180 4	Zeichnung: 1:1 Bereich:
Kunden: Name: Adresse: Telefon: Telefax: E-Mail: Datum:	Auftrag: MO 22 - MO 189 (Bestellung) MAXIMATOR Mini - Pumpe (Ansichts-/Maßzeichnung) (Zust.-Nr.): VP 10-00-217 (3120)
A: Werk Stabenitz 1 25.01.03 Scl. B: Spill. überstr. 1 12.02.03 Scl. C: Fertigung	Maßstab: Zeichnungsmaß: Verstoff: Umriss: Blatt:

Leistungsdiagramm/Performance Graph M(O)(SF) 111

Prüfflüssigkeit/Test Liquid: Wasser-Öl-Emulsion/Water Oil Emulsion ca. 1 - 10 cst

Nur für/Only for MSF 111 & MO 111:
P_{Bmax}/Max.outlet pressure 1000 bar

