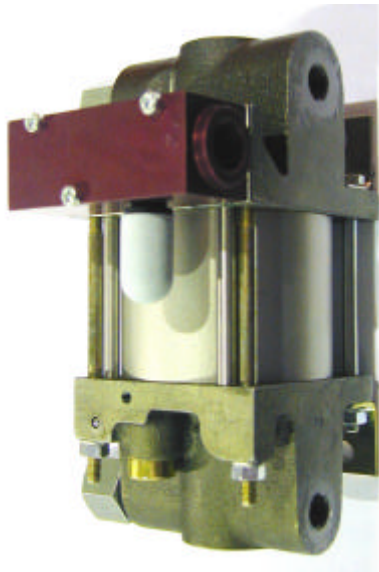


Technical Data Sheet	MO189D	Oil service
----------------------	---------------	-------------



MO189D

double acting, single air drive head
(Standard= Side inlet)

Technical Data:

Air drive pressure:	1-10 bar / 14,5—145 psi
Calculated Outlet Pressure at an air drive of 10 bar/145 psi	1,000 bar/ 14,500 psi (maximum permitted)
Pressure ratio:	1:220
Displacement volume/double stroke	1.2 cm ³ / 0.07 cu.inch
Connections	
Inlet:	Standard: Bottom inlet 3/8 BSP
Outlet:	1/4 BSP
Air drive	3/8 BSP
Maximum operating temperature	60°C
Net weight	4.5 kg

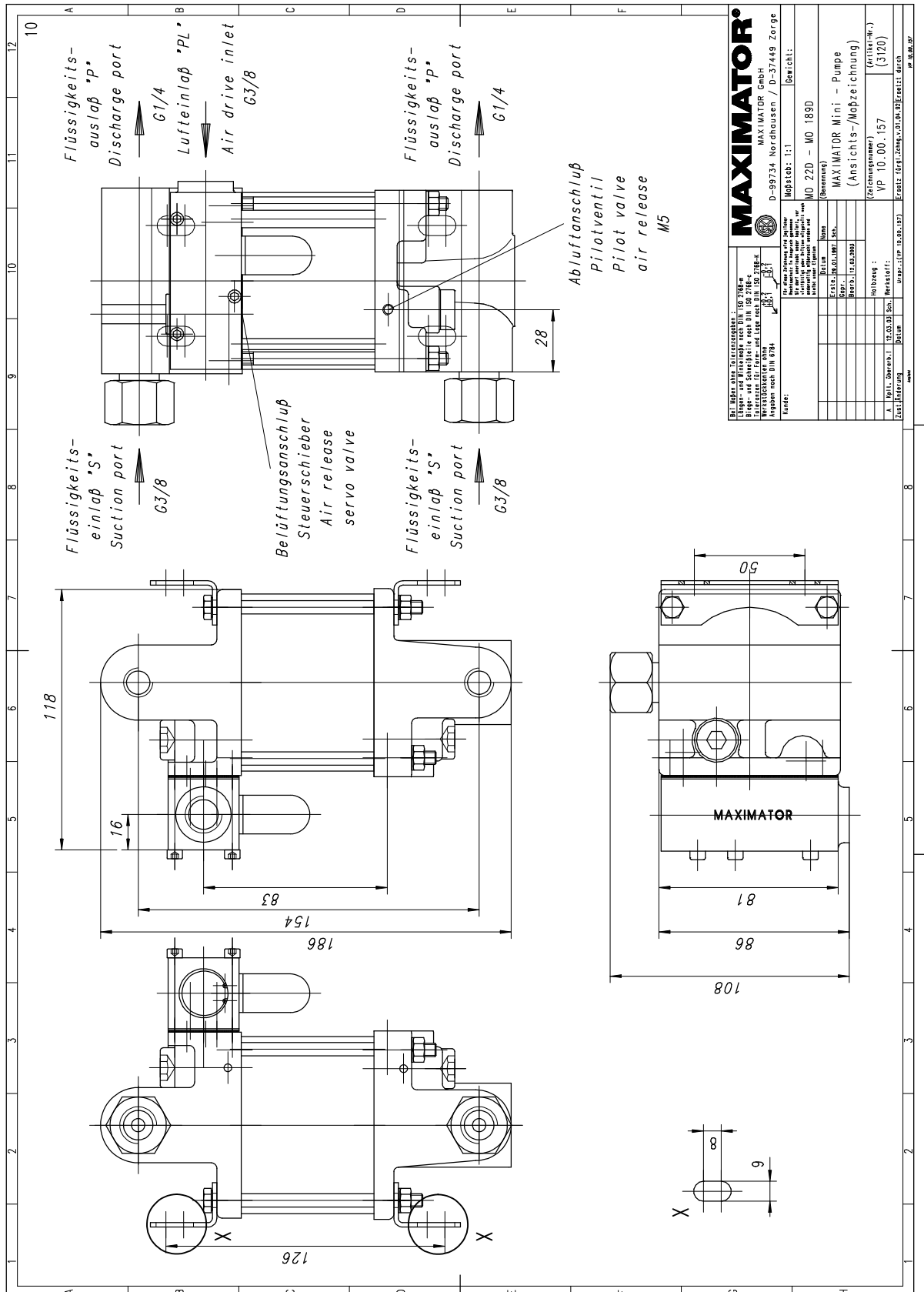
Pressure and flow performances, please see enclosed graph.

Material of construction:	Top cap	Aluminium
	Air cylinder	Aluminium
	seal package:	Polyurethane, Buna N
	Pump Body:	Cast iron GGG50
	Piston	Tool steel 1.4112 (hardened)
Approximate Dimensions:	Height:	228 mm
	Depth:	102 mm
	Width:	80 mm
	Special inlet and outlet ports, i.e. NPT	MO189D-NPT
	Special seal material to handle special fluids on request.	
Available Accessories		
Air control units for M series with filter pressure regulator, control pressure gauge and shut off valve:	MO189D with C1	
To protect the pump against excessive outlet pressures or to limit the outlet pressure, a safety valve can be fitted to the air control unit in the air drive line:	MO189D with C1/SVair (The required outlet pressure has to be indicated.)	

Please consult factory for more information.

All technical and dimensional information subject to change. All General Terms and Conditions of sale, including limitations of our liability, apply to all products and services sold.

Standard pump comes with BSP ports and side inlet. Bottom inlet not available



MAXIMATOR® MAXIMATOR GmbH D-99734 Nordhausen / D-37449 Zorge	
Maßstab: 1:1 Blatt: MO 22D - MO 189D (Bestensatz)	MAXIMATOR Mini - Pumpe (Ansichts-/Maßzeichnung)
Hersteller: (3120) VP 10.00.157 (3120)	Ersatzteil- / Reparaturschein
Datum:	Datum:

Leistungsdiagramm/Performance Graph M(O) 189 D

Prüfflüssigkeit/Test Liquid: Wasser-Öl-Emulsion/Water Oil Emulsion ca. 1 - 10 cst

