

Technical Data Sheet	<b>MSF4(L)</b>	Special liquids
----------------------	----------------	-----------------



**MSF4(L)**  
Single acting, single air drive head  
and distance piece  
(Standard= Bottom inlet)

**Technical Data:**

Air drive pressure:	1-10 bar / 14,5—145 psi
Calculated Outlet Pressure at an air drive of 10 bar/145 psi	40 bar/ 580 psi
Pressure ratio:	1:4
Displacement volume/double stroke	30.5 cm <sup>3</sup> / 1.86 cu.inch
<b>Connections</b>	
Inlet:	Standard: Bottom inlet 1 BSP
Outlet:	1/2 BSP
Air drive	3/8 BSP
Maximum operating temperature	60°C
Net weight	6.7 kg

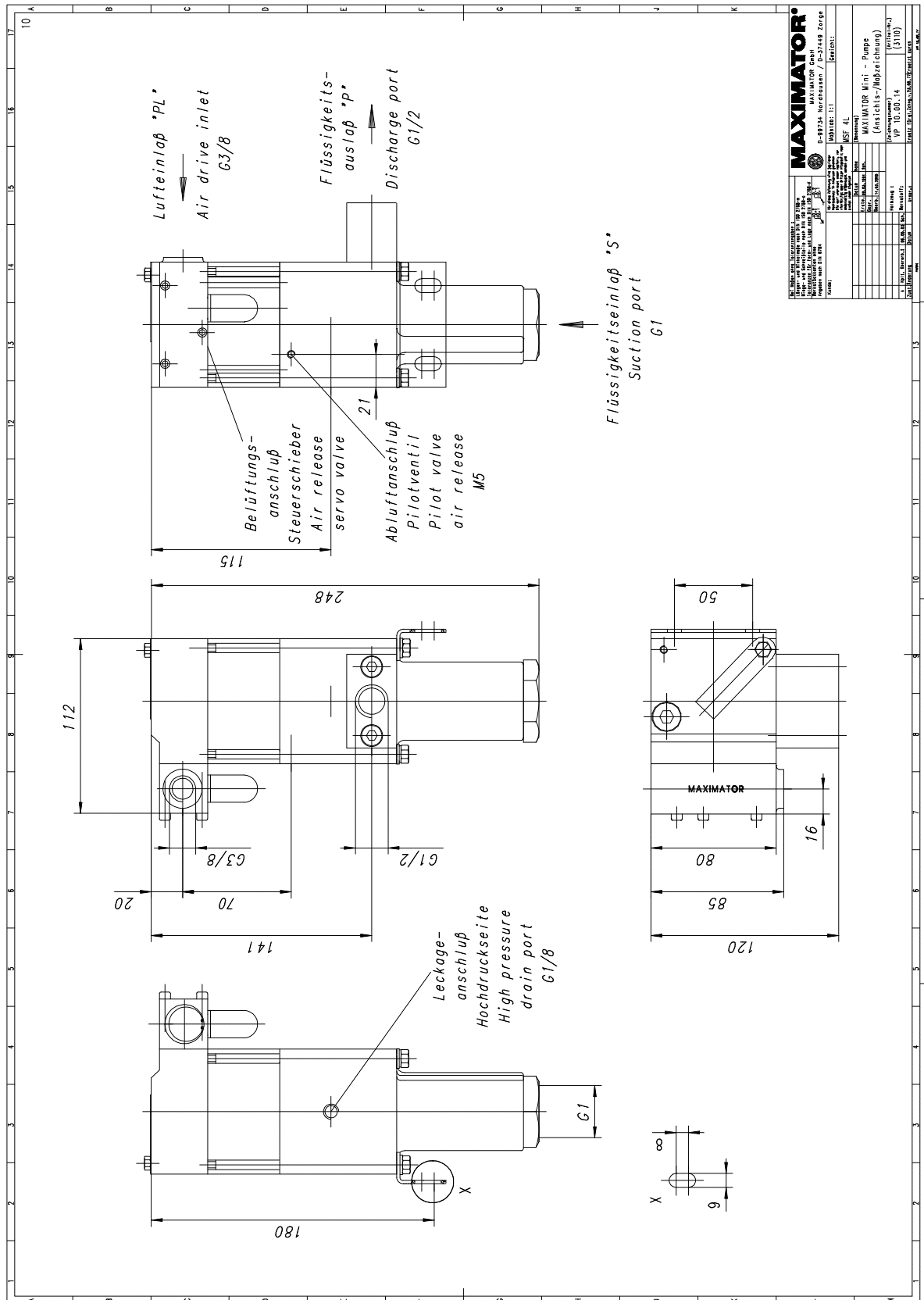
Pressure and flow performances, please see enclosed graph.

<b>Wetted materials of construction:</b>	seal package:	MSF4(L): Filled Teflon (PTFE) Fluorcarbon (V)
	Pump Body:	1.4571
	Piston:	1.4571
	Fittings:	1.4305
<b>Approximate Dimensions:</b>	Height:	247 mm
	Depth:	112 mm
	Width:	108 mm
	Side inlet	MSF4(L) <b>S</b>
<b>Available Accessories</b>	Special inlet and outlet ports, i.e. NPT	MSF4(L)- <b>NPT</b>
	Special seal material to handle special fluids on request.	
Air control units for M series with filter pressure regulator, control pressure gauge and shut off valve:	<b>MSF4(L) with C1</b>	
To protect the pump against excessive outlet pressures or to limit the outlet pressure, a safety valve can be fitted to the air control unit in the air drive line:	<b>MSF4(L) with C1/SVair</b> (The required outlet pressure has to be indicated.)	

**Please consult factory for more information.**

All technical and dimensional information subject to change. All General Terms and Conditions of sale, including limitations of our liability, apply to all products and services sold.

Standard pump comes with BSP ports and bottom



## Leistungsdiagramm/Performance Graph M(O)(SF) 4

Prüfflüssigkeit/Test Liquid: Wasser-Öl-Emulsion/Water Oil Emulsion ca. 1 - 10 cst

