

Technical Data Sheet	S60	Oil service
----------------------	------------	-------------



S60

Single acting, single air drive head

Technical Data:

Air drive pressure:	1-10 bar / 14,5—145 psi
Calculated Outlet Pressure at an air drive of 10 bar/145 psi	610 bar/ 8,845 psi
Pressure ratio:	1:61
Displacement volume/double stroke:	8.0 cm ³ / 0.49 cu.inch
Connections:	
Inlet: (only side inlet available)	1/2 BSP
Outlet:	3/8 BSP
Air drive:	1/2 BSP
Maximum operating temperature:	60°C
Net weight:	9.1 kg

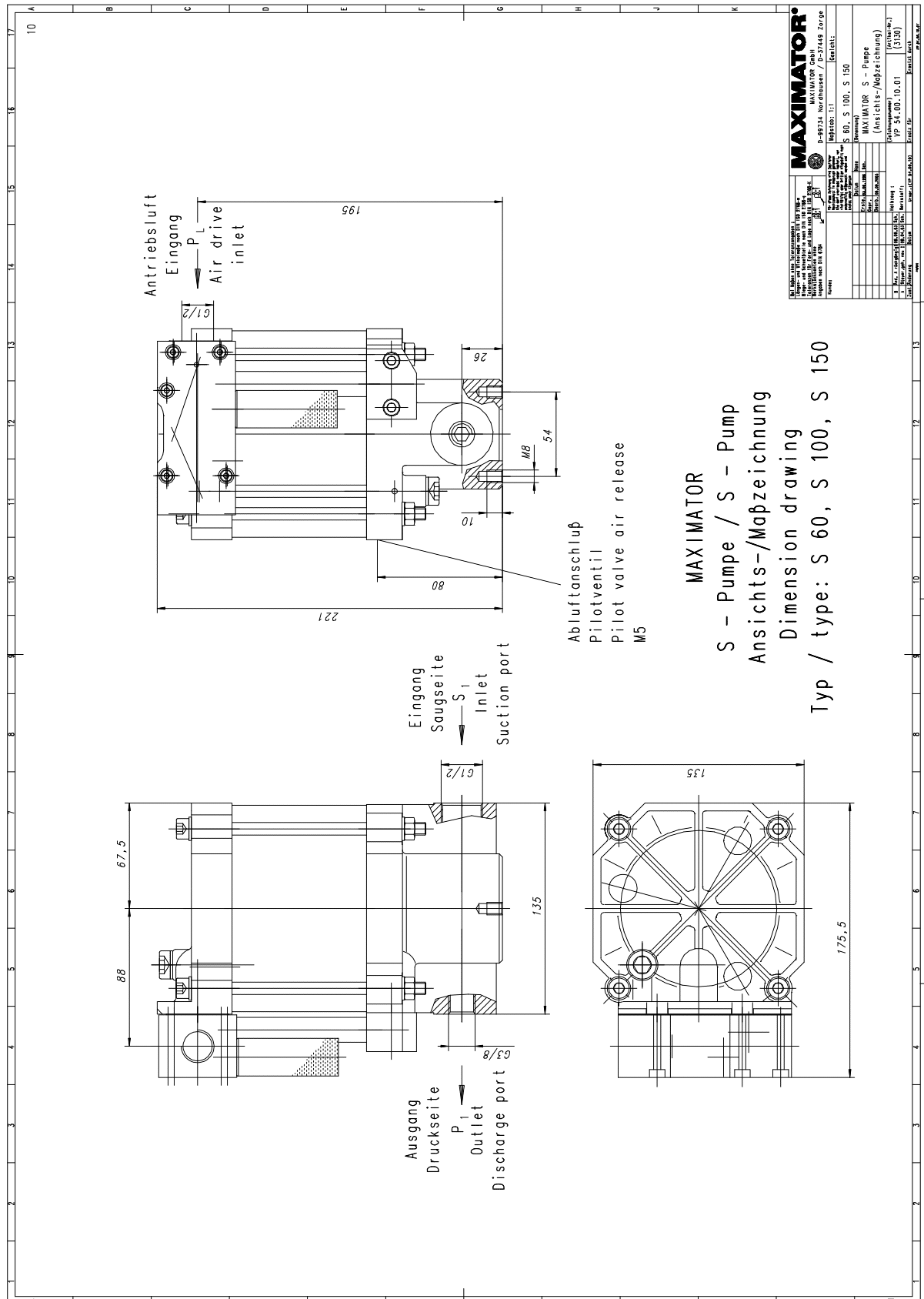
Pressure and flow performances, please see enclosed graph.

Material of construction:	Top cap:	Aluminium
	Air cylinder:	Aluminium
	seal package:	Polyurethane, Buna N
	Pump Body:	GGG50
	HP Piston	1.4112 (hardened)
Approximate Dimensions:	Height:	221 mm
	Depth:	135 mm
	Width:	175.5 mm
	Special inlet and outlet ports, i.e. NPT	S60-NPT
	Special seal material to handle special fluids on request.	
Available Accessories		
Air control units for M series with filter pressure regulator, control pressure gauge and shut off valve:	S60 with C1.5	
To protect the pump against excessive outlet pressures or to limit the outlet pressure, a safety valve can be fitted to the air control unit in the air drive line:	S60 with C1.5/SVair (The required outlet pressure has to be indicated.)	

Please consult factory for more information.

All technical and dimensional information subject to change. All General Terms and Conditions of sale, including limitations of our liability, apply to all products and services sold.

Standard pump fluff comes with BSP ports, only side inlet available.



Leistungsdiagramm/Performance Graph S 60

Prüfflüssigkeit/Test Liquid: Wasser-Öl-Emulsion/Water Oil Emulsion ca. 1 - 10 cst

