


Air Amplifier	SPLV3 Order code: 3220.0348
SPLV 3 Pressure ratio: 1:3.2	

Short description

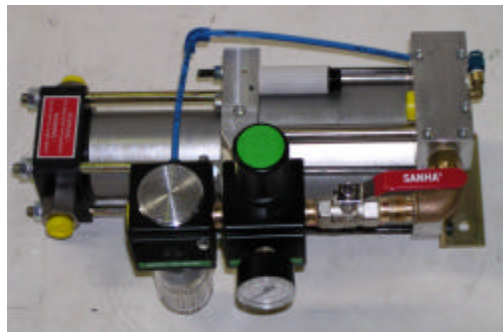
The MAXIMATOR Air Amplifier SPLV3 is suitable for the compression of shop air. Due to its drive concept it can increase the pressure of an existing shop air line in a ratio of 1:3.2. Only shop air is needed to operate the amplifier.

Benefits

- Direct pressure increase for a single application
- No energy consumption by the air amplifier when the outlet pressure is reached
- Non electrical installation, so application in ex areas possible

Technical data:

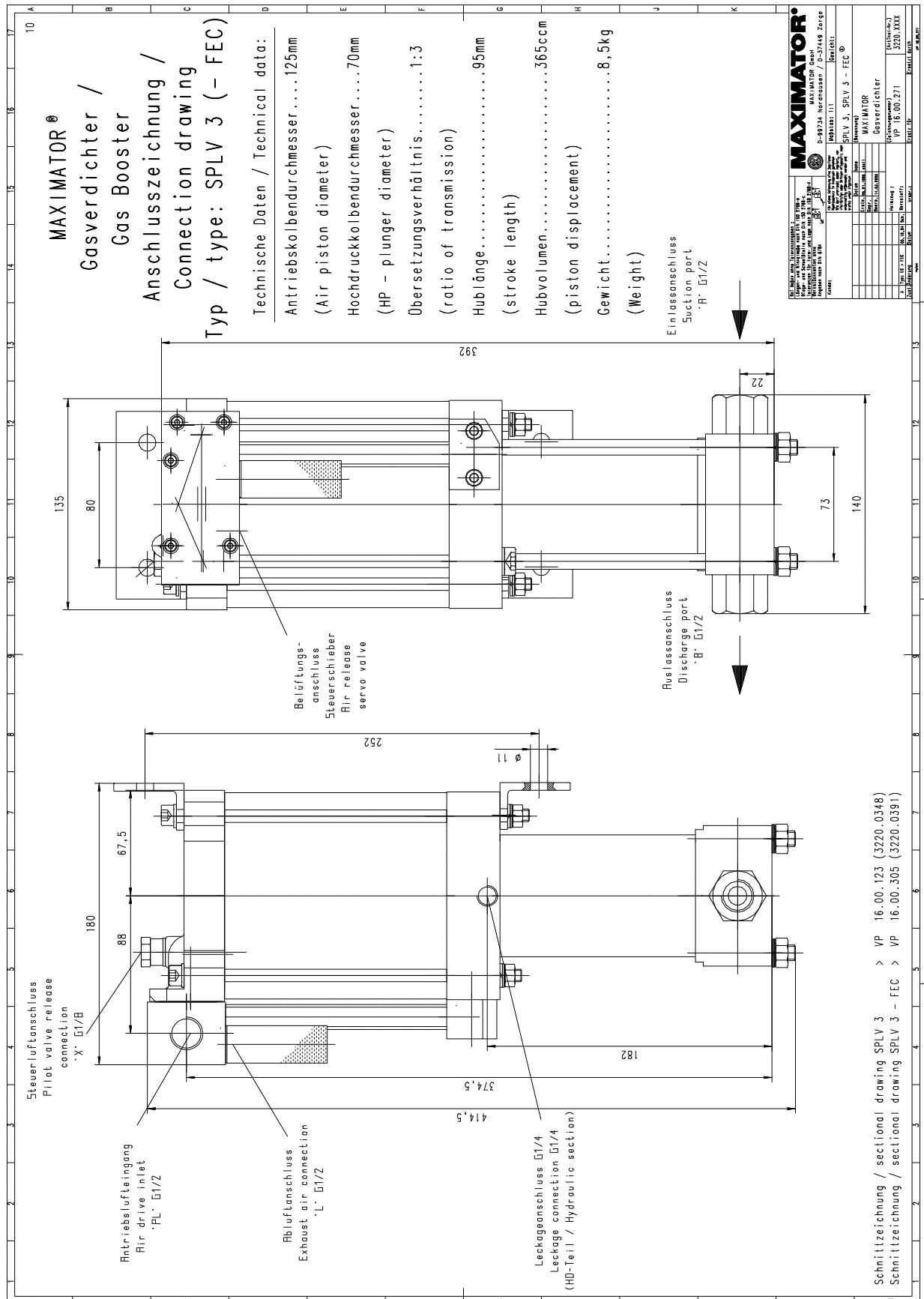
Inlet pressure:	1 to 32 bar	Connections:	
Outlet pressure:	to max. 20 bar	Inlet:	1/2 BSP
Pressure ratio:	1:3.2	Outlet:	1/2 BSP
Medium:	shop air and nitrogen	Exhaust:	1/2 BSP
Air drive pressure:	1 to 10 bar	Air drive:	1/2 BSP (1/8 BSP pilot valve)
Maximum operating temperature:	60°C		
Weight:	8.5 kg		
Wetted material of construction:	All wetted parts are of light metal resp. stainless steel. Dynamic seals are of special wear resisting PTFE (Teflon).		
Accessories:	Air control unit „C1.5“, comprising of combined filter pressure regulator, control pressure gauge and shut-off valve		



SPLV 3 with assembled air control unit

Please consult factory for more information.

All technical and dimensional information subject to change. All General Terms and Conditions of sale, including limitations of our liability, apply to all products and services sold



MAXIMATOR	
MAXIMATOR GmbH	MAXIMATOR
WALKENRIEDER STRASSE 15	D-37449 ZORGE
TELEFON +49 (0) 5586 803-0	FAX +49 (0) 5586 803-40
E-MAIL info@maximator.de	WWW.maximator.de
Typ: SPLV 3 - FEC Zeichnung: Gasverdichter VP 16.00.271 3220.XXX 16.02.01	

Schnittzeichnung / sectional drawing SPLV 3 > VP 16.00.123 (3220.0348)
 Schnittzeichnung / sectional drawing SPLV 3 - FEC > VP 16.00.305 (3220.0391)

